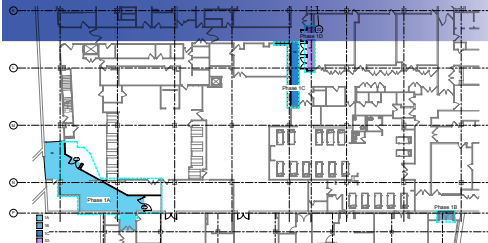
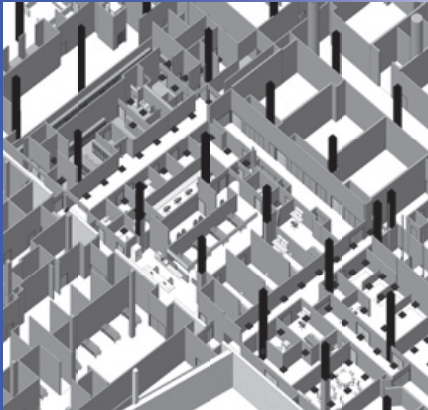


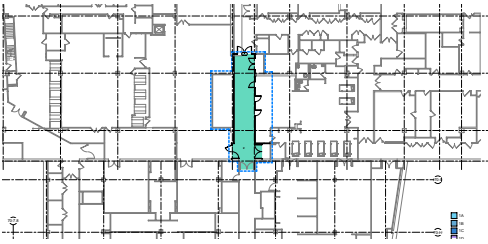
CANNON DESIGN
BRIGHAM & WOMENS
HOSPITAL RENOVATION
& CONNECTION

SCHEMATIC & DESIGN DEVELOPMENT
PROJECT PHASING
PROJECT DRAWINGS

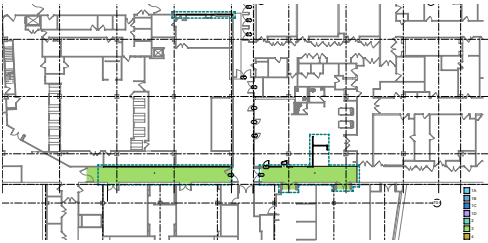
2006 - 2008



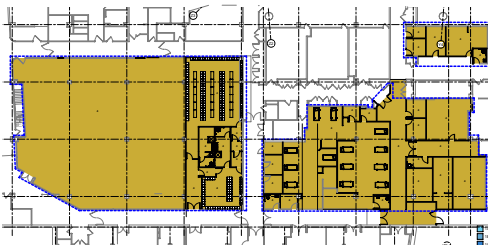
Phase 1



Phase 2

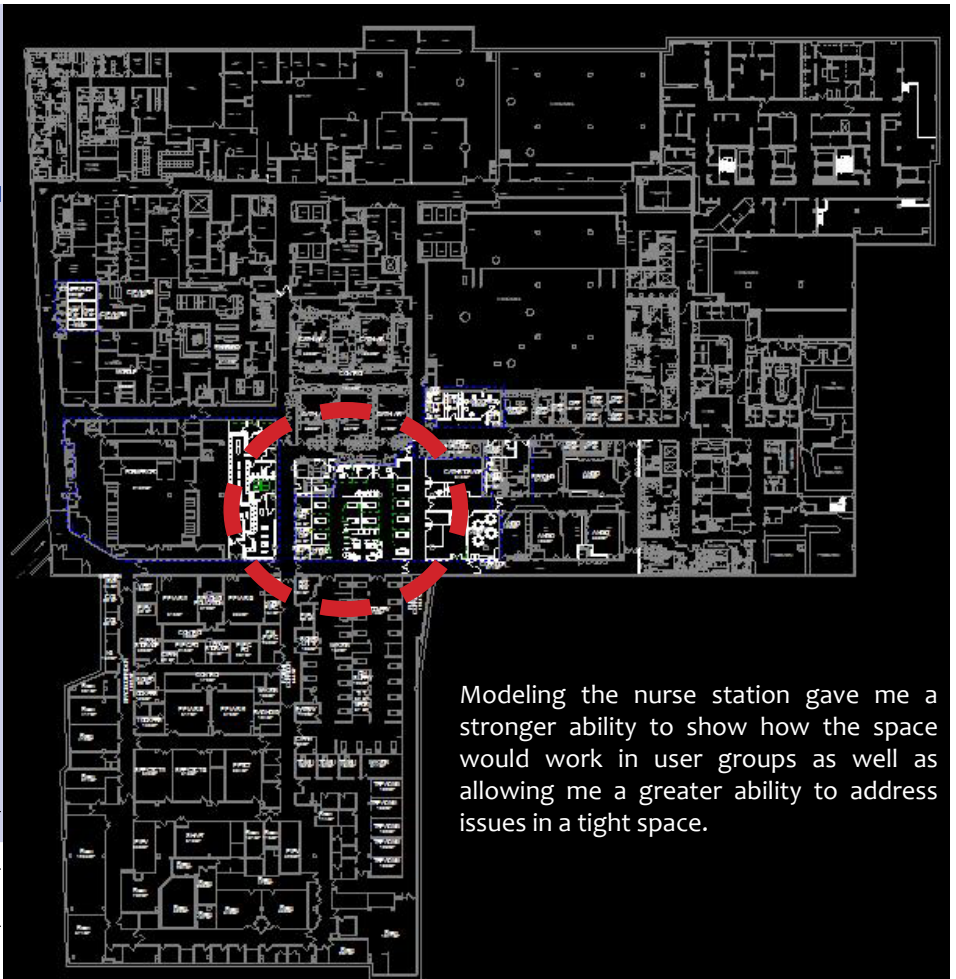


Phase 3



Phase 4

Loren Witzel



Modeling the nurse station gave me a stronger ability to show how the space would work in user groups as well as allowing me a greater ability to address issues in a tight space.



This project involved the connection of a new hospital building to an existing building two floors below ground. The program for the space included a recovery suite, a pharmaceutical dispensary, offices, meeting space, storage and lockers. My tasks included site analysis and documentation, attending user group and consultant meetings, generating a REVIT model using existing CAD drawings and designing the space to meet their needs. The scope of the project included only renovated space adjacent to the penetrations to the new building.

Utilizing the 3D capabilities of REVIT allowed not only for me to more easily control construction phases, but also to have a better grasp of the forest of columns the make up Brigham & Women's Hospital and how to design around them.

www.lorenwitzel.com

lw@lorenwitzel.com